



HITEK AI

COMPANY PROFILE

Our technologies are innovative and impactful, offering advanced and sustainable solutions for smart cities of the future, with a Net Zero plan powered by cloud, mobility, IoT, and AI platforms.

 www.hitek.ai

 info@hitek.ai



Welcome to **HITEK AI**

The evolution of technology continues to change the way in which businesses work. Companies around the globe that want to excel in their industry sectors must embrace smart technologies.

HITEK AI provides a set of intelligent commercial solutions, providing businesses with a holistic approach, connecting support to operational units and management to employees. This bridges potential communication and information gaps, producing the ultimate productivity and efficiency outcome, which today is a prerequisite for success.

We offer end to end solutions including consultancy, project management, hardware, applications, network, and infrastructure services. **HITEK AI** supports most industry sectors with an intelligent energy management platform, which supports Net Zero initiatives, by providing visibility to CO2 emissions, produced by company assets, with the most advanced CAFM and smart building technology platforms. A range of our IoT sensors along with smart wearables, improves facility lifecycles, assets, and staff productivity.

HITEK AI acts as a catalyst to digitalise businesses that want to integrate with smart & sustainable cities. By adding real value to our customers, HITEK AI achieves greater cost savings and operational efficiency.

HITEK AI

Mission and Vision

Why Choose Us?

Our solutions are developed based on what businesses need.



Mission

To digitalise businesses with the most innovative and impactful technologies supporting global sustainability initiatives.



Vision

Technology that connects, innovates & empowers any business activity anywhere in the world.

About The Company

Connecting People, Processes, and Buildings with an intelligent and connected Platform.

HITEK's technology was created by leading industry experts with over 40 years of technical expertise and operational experience in Facilities Management, Hospitality and Technology Infrastructure. Our broad range of intelligent applications aim to connect people, processes and technology empowering our customers with digital, business and technological transformation.

Adapting to the growing needs of a fast-paced and innovative digital world, **HITEK AI** is focused on developing state of the art connected, automated, and intelligent solutions for resource-intensive industries. Our solutions complement leaner and more sustainable operational processes to increase productivity and reduce energy consumption.



SMART



SECURE



SUSTAINABLE



Our Effective Product & Services



FM Digitalisation

Helps traditional FM companies to digitalise their FM services with unified, integrated, and connected technologies for cleaning, maintenance, security, waste, carbon, and energy management.



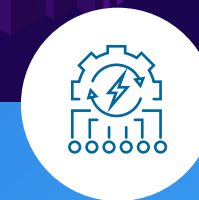
CAFMTEK

An advanced SAAS based CAFM platform, is integrated with WhatsApp AI ChatBot, Mobility & Intuitive BI, allowing advanced asset, people, SLA, and location management.



BMSTEK

Based on innovative open but secure protocols, this flexible and scalable BMS platform, centralises and connects any type of asset, as well as an existing BMS for local & remote monitoring & control. HITEK's command and control room provides monitoring 7/24.



POWERTEK

AI & ML-based intelligent energy analytical platform producing portfolio, building, asset, and location performance based on energy, waste & carbon statistics, and KPIs, fed by live and historical data from IoT, BMS, or even manual feed.



CARBONTEK

Carbon Footprint Calculation Tool to support businesses developing their NetZero strategy



SAFETEK

Auditing platform to enhance productivity and increase transparency for health and safety, quality assurance, and operational inspections conducted on the ground by FM service providers for their clients with digitally automated reports and dashboards.



Security+

A mobility App for security guard inspections, incident reporting, and SOS, visitor access management with facial biometrics to an advanced AI CCTV platform, with 20+ algorithms and smart parking with ANPR.



IoTEK

Includes 20+ smart sensors measuring energy, temperature, humidity, vibration, footfall, & more, connected to SAAS based cloud platform providing historical & real-time analysis based on ML & AI.



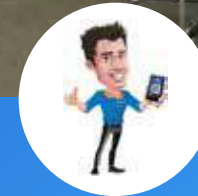
TRACKTEK

Working with any sim card, Smart Watch helps to track and communicate with employees on-site for immediate action while connecting with CAFM tasks. Automatically supports welfare by monitoring vital health signs.



FLEETEK

An online SAAS solution that digitalises fleet scheduling and asset management, with live tracking, scheduling, route optimisation & incident reporting, along with a driver's mobile app.



MyBuddy

Mobility App to facilitate targeted project communication, workforce HR communication with an automated chatbot, with the ability to make requests for leave applications, participate in online learning and training courses, and more.

Driving Facilities, Community, Property & The Hospitality Industry's Digital Transformation through Smart & Green Solutions



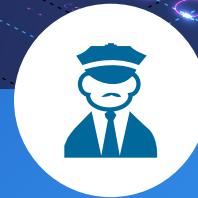
SMART CLEANING

Intelligent cleaning management platform that enables data-driven, on-demand cleaning operations to achieve the highest level of cleanliness and hygiene standards.



SMART MEP

Combined technology system; state-of-the-art technologies, IoT-sensors, machine learning (ML), artificial intelligence (AI) and cloud architecture.



SMART SECURITY

From tracking guards on tour to managing your visitors and generating incident reports, Smart Guard improves accountability, optimises operations, and provides management with insights to reduce liabilities and enhance overall efficiency.



SMART ENERGY

Integrated with BMS, IoT, and utilities for digital Energy, Waste, and Carbon Management.

Sustainable and Integrated Solutions

24/7 Command & Control Room

Energy Analyst: the core team of centralised energy management, creating and monitoring KPIs, configuring reports and dashboards and liaising with operational teams on the ground

Expert solutions specialists: they support the analysts with an in-depth knowledge of the expert solution that they use, particularly the EMS

IT: Maintain the infrastructure, the planning and hosting, upgrades, as well as the delivery of the SLA, solution procurement projects as well as managing licences

Smart metering and connectivity: they take care of integration with systems and protocols, dealing with the complexity of an IoT world lacking in convergence and harmony.
Technical operators: Analysts that work closely on a daily basis with all stakeholders

Site Managers: they can either be on-site, close to the site, or remote, but they are highly qualified and trained, with a specific knowledge of operational tools

End-users: for reporting, but also to coordinate the communication campaign related to energy efficiency



The 24x7 command centre is one facility that pro-actively assists FM teams to become more efficient in their everyday operations, whether it's reactive, predictive or corrective actions.

- Monitor People, Process, Assets & Locations
- Predict and Acknowledge
- Support FM using HITEK SAUDI technologies
- Continuous process - status and update operations team

Key Features

- Supported Maintenance Operation
- Efficient Facility Management
- Visibility & Proactive Support
- Cost-Efficient Energy saving
- Next Generation Tech Platforms

Benefits

- Energy Analysis
- Expert Solution Specialists
- Information Technology
- Smart Metering and Connectivity
- Technical Operators
- Site Managers
- End-Users

Our Prestigious Clients





HITEK AI

contact us to find out more!

 Toll Free - 800 HITEK

 info@hitek.ai

 www.hitek.ai
