

# HITEK AI

Smart. Secure. Sustainable

AI Powered smart cities platforms providing building efficiency and performance Insights and Transparency, with Net Zero roadmap.

☎ +96 657 0824 498

✉ info@hitek.ai  
🌐 www.hitek.ai

# Welcome to **HITEK AI**

The evolution of technology continues to change the way in which businesses work. Companies that want to excel in their industry sectors must embrace **HITEK** technologies.

**HITEK** provides a set of intelligent commercial solutions, providing businesses with a holistic approach, connecting support to operational units and management to employees. This bridges potential communication and information gaps, producing the ultimate productivity and efficiency outcome, which today is a prerequisite for success.

We offer end to end solutions including consultancy, project management, hardware, applications, network, and infrastructure services. **HITEK** supports most industry sectors with

an intelligent energy, water, waste and carbon monitoring platform, supporting Net Zero initiatives, by providing visibility to CO2 emissions, produced by company activities. With our AI powered smart CAFM, building technology, IoT sensors along with smart wearables solutions, improves facility and asset lifecycle, staff productivity and reduce manpower and energy cost.

**HITEK** acts as a catalyst to digitalise businesses that want to integrate with smart & sustainable cities. By adding real value to our customers, **HITEK** achieves greater cost savings and operational efficiency.



# HITEK AI

## GOALS & OBJECTIVES



### Digitize, Connect, Automate & Centralize

Connected Automated & remotely control of Assets



### Transparent

Visibility of Assets health & energy data based on historical and live data coming from IoT based BMS



### Unified, Secure & Integrated

Combining systems securely for seamless operations

## WHY HITEK

Inhouse AI & Cloud Team



Inhouse Sustainability Experts



Own Cloud & APPS



Inhouse Development



Inhouse Consultants



Partner Eco System



## Why Choose Us?

HITEK provides smart AI-powered technology solutions that streamline operations, maximize efficiency, and prioritize sustainability

Our technologies provide seamless communication and better operational productivity through connecting:

People + Processes + Buildings



SMART

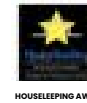


SECURE



SUSTAINABLE

## AWARDS





# HITEK PRODUCTS

## CAFMTEK

Mobile-enabled CAFM software for asset, location, and resource management.



Available on



## POWERTEK

Innovative energy management solution with consumption insights and alerts.

## CARBONTEK

Online carbon footprint calculation tool for measuring, analyzing, and reducing emissions.

## IOTEK

Remote monitoring solution with AI-powered data analytics and sensors.

## FLEXIGUEST

AI-powered hospitality solution for guest journey digitization and operational streamlining.

## BMSTEK

Intelligent, energy-centered maintenance system for smart buildings.

## FLEETEK

Online fleet management solution with live tracking, scheduling, and incident reporting.

## TRACKTEK

AI-powered smartwatch for employee performance, well-being, and task management.

## SECURITY+

Digitizing security operations with real-time reporting and centralized communication.

## SAFETEK

Paperless safety management system with automated reporting and incident platform.

## WASHROOMTEK

AI-based washroom management system with real-time data and feedback.

## EYETEK

AI-based video surveillance platform with facial recognition and situational awareness.

## PARKTEK

Smart parking solution with live view, barrier control, and reporting.

# HITEK AI

## COMMAND & CONTROL

Centralized management room with real-time monitoring, live tracking, remote system control, and AI-powered analytics for optimized decision-making and incident response across operations.



## Products Features

1

### Modular & Scalable

Tailored to suit diverse operations needs and budgets

2

### AI & Data-Driven

Real-time data, AI and analytics to optimize operations and decision-making

3

### Citizen-Centric

Connecting people with systems through interactive platforms

4

### Sustainable & Secure

Fully secure platforms and Smart sustainable solutions for better Utility Management

# Our Effective Product & Services



## FM Digitalisation

Helps traditional FM companies to digitalise their FM services with unified, integrated, and connected technologies for cleaning, maintenance, security, waste, carbon, and energy management.



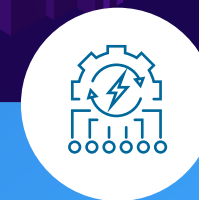
## CAFMTEK

An advanced SAAS based AI CAFM platform, is integrated with WhatsApp AI ChatBot, Mobility & Intuitive BI, allowing advanced asset, people, SLA, and location management.



## BMSTEK

Based on innovative open but secure protocols, this flexible and scalable BMS platform, centralises and connects any type of asset, as well as an existing BMS for local & remote monitoring & control. **HITEK's** command and control room provides monitoring 24/7.



## POWERTEK

AI & ML-based intelligent energy analytical platform producing portfolio, building, asset, and location performance based on energy, waste & carbon statistics, and KPIs, fed by live and historical data from IoT, BMS, or even manual feed.



## CARBONTEK

Carbon Footprint Calculation Tool to support businesses developing their NetZero strategy



## SAFETEK

Auditing platform to enhance productivity and increase transparency for health and safety, quality assurance, and operational inspections conducted on the ground by FM service providers for their clients with digitally automated reports and dashboards.



## Security+

A mobility App for security guard inspections, incident reporting, and SOS, visitor access management with facial biometrics to an advanced AI CCTV platform, with 20+ algorithms and smart parking with ANPR.



## IoTEK

Includes 20+ smart sensors measuring energy, temperature, humidity, vibration, footfall, & more, connected to SAAS based cloud platform providing historical & real-time analysis based on ML & AI.





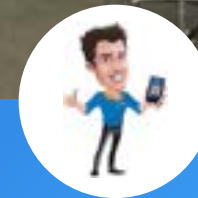
## TRACKTEK

Working with any sim card, Smart Watch helps to track and communicate with employees on-site for immediate action while connecting with CAFM tasks. Automatically supports welfare by monitoring vital health signs.



## FLEETEK

An online SAAS solution that digitalises fleet scheduling and asset management, with live tracking, scheduling, route optimisation & incident reporting, along with a driver's mobile app.



## MyBuddy

Mobility App to facilitate targeted project communication, workforce HR communication with an automated chatbot, with the ability to make requests for leave applications, participate in online learning and training courses, and more.

# Driving Facilities, Community, Property & The Hospitality Industry's Digital Transformation through Smart & Green Solutions



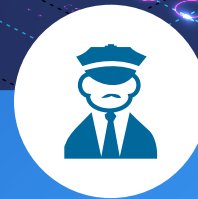
## SMART CLEANING

Intelligent cleaning management platform that enables data-driven, on-demand cleaning operations to achieve the highest level of cleanliness and hygiene standards.



## SMART MEP

Combined technology system; state-of-the-art technologies, artificial intelligence (AI) and cloud architecture.



## SMART SECURITY

From tracking guards on tour to managing your visitors and generating incident reports, Smart Guard improves accountability, optimises operations, and provides management with insights to reduce liabilities and enhance overall efficiency.



## SMART ENERGY

Integrated with BMS, IoT, and utilities for digital Energy, Waste, and Carbon Management.

## Sustainable and Integrated Solutions



# 24/7 Command & Control Room

**Energy Analyst:** the core team of centralised energy management, creating and monitoring KPIs, configuring reports and dashboards and liaising with operational teams on the ground

**Expert solutions specialists:** they support the analysts with an in-depth knowledge of the expert solution that they use, particularly the EMS

**IT:** Maintain the infrastructure, the planning and hosting, upgrades, as well as the delivery of the SLA, solution procurement projects as well as managing licences

**Smart metering and connectivity:** they take care of integration with systems and protocols, dealing with the complexity of an IoT world lacking in convergence and harmony.

**Technical operators:** Analysts that work closely on a daily basis with all stakeholders

**Site Managers:** they can either be on-site, close to the site, or remote, but they are highly qualified and trained, with a specific knowledge of operational tools

**End-users:** for reporting, but also to coordinate the communication campaign related to energy efficiency



The 24x7 command centre is one facility that pro-actively assists FM teams to become more efficient in their everyday operations, whether it's reactive, predictive or corrective actions.

- Monitor People, Process, Assets & Locations
- Predict and Acknowledge
- Support FM using HITEK SAUDI technologies
- Continuous process - status and update operations team

## Key Features

- Supported Maintenance Operation
- Efficient Facility Management
- Visibility & Proactive Support
- Cost-Efficient Energy saving
- Next Generation Tech Platforms

## Benefits

- Energy Analysis
- Expert Solution Specialists
- Information Technology
- Smart Metering and Connectivity
- Technical Operators
- Site Managers End-Users

# Our Prestigious Clients





# HITEK AI

contact us to find out more!

## HITEK – Beyond One

Al Murooj Tower Building,  
First Floor - Olaya Street - Riyadh,  
Kingdom of Saudi Arabia.

☎ +966570824498

✉ info@hitek.ai

🌐 www.hitek.ai

### Dubai Office

P.O. Box: 5423  
Farnek Building, Floor 3,  
Al Quoz, Dubai

☎ +971 4 382 4498

### AbuDhabi Office

P.O.Box: 62291  
AUH Mazyad Mall,  
Office Tower 2, Unit 1003,  
Mohammed Bin Zayed City,  
Abu Dhabi

☎ Toll Free - 800 HITEK

✉ info@hitek.ai

🌐 www.hitek.ai